

BRUNTON

RESIDENTIAL



OSBORNE COURT, JESMOND, NE2

£1,200 Per Month

BRUNTON

RESIDENTIAL





BRUNTON

RESIDENTIAL



BRUNTON

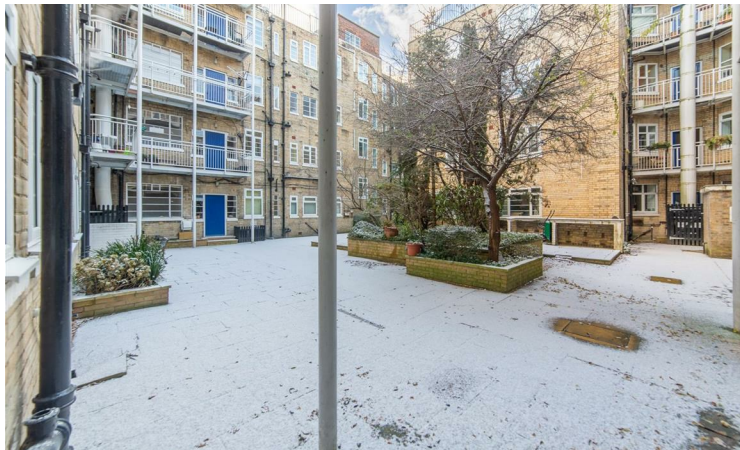
RESIDENTIAL



*****360 VIRTUAL TOUR*** - Available 2nd June 2026- Rent £1,200pcm - 2 Bedroom Ground Floor Apartment - Set in a beautiful art deco building in a very popular area of Jesmond. Extensive bus routes offer easy access to Newcastle City Centre - The property comes with allocated parking and has recently been refurbished to a high standard - available on a furnished basis.**

BRUNTON

RESIDENTIAL



BRUNTON

RESIDENTIAL

Brunton Residential are pleased to offer to the rental market this well presented and recently renovated 2 bedroom ground floor apartment, located in the popular Osborne Court, Jesmond.

Internally the property is furnished to a high standard and briefly comprises: a private entrance, a large lounge with an expansive window, a Brand new modern fitted kitchen, 2 bedrooms and a newly renovated modern bathroom. Externally the property benefits from off-street parking, other benefits include gas central heating.

BRUNTON

RESIDENTIAL

TENURE :

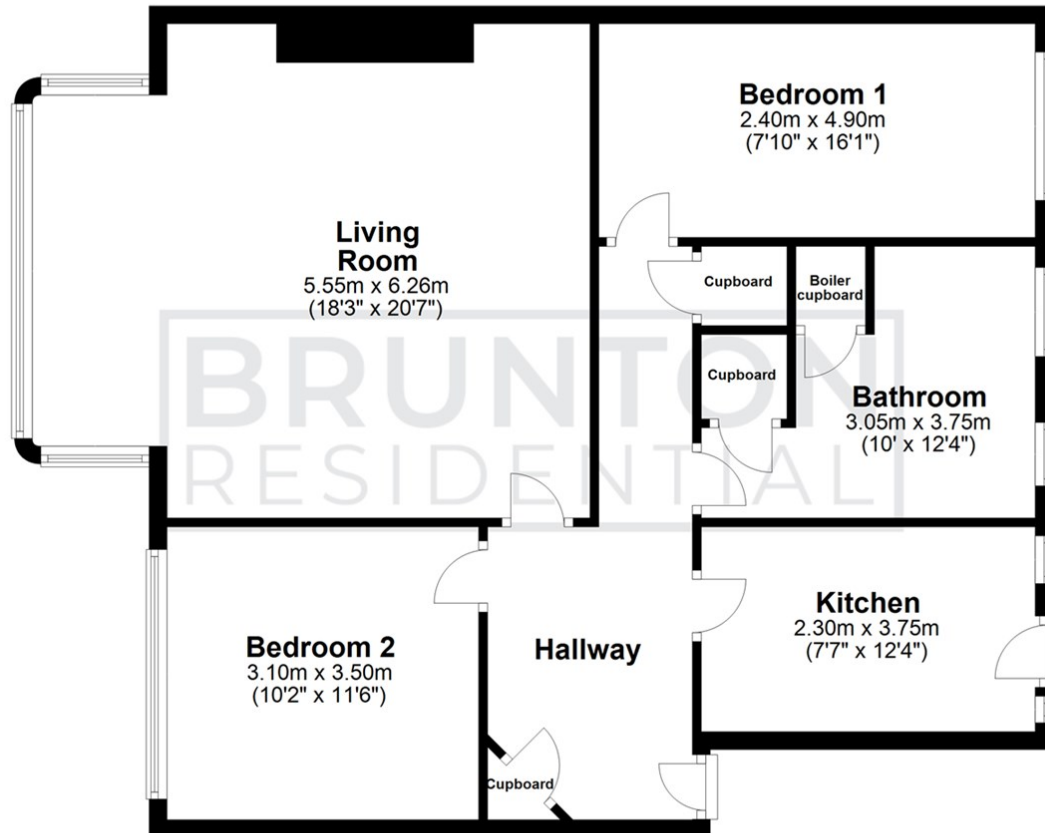
LOCAL AUTHORITY : Newcastle

COUNCIL TAX BAND : C

EPC RATING : C

Ground Floor

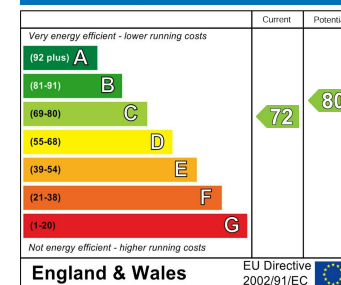
Approx. 88.6 sq. metres (954.1 sq. feet)



All measurements are approximate and are for illustration only.
Plan produced using PlanUp.

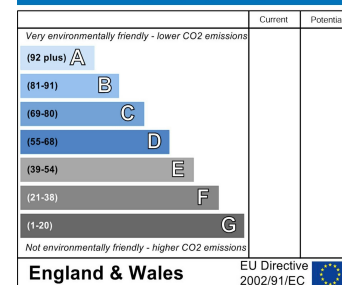


Energy Efficiency Rating



England & Wales EU Directive 2002/91/EC

Environmental Impact (CO₂) Rating



England & Wales EU Directive 2002/91/EC